



Ford F-150
2WD & 4WD

09/15
TP20296, Rev.5

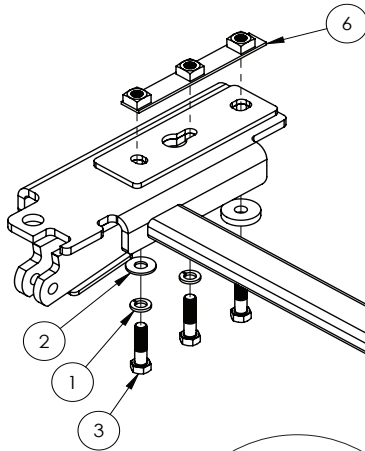


BOLT TORQUE SPECIFICATIONS

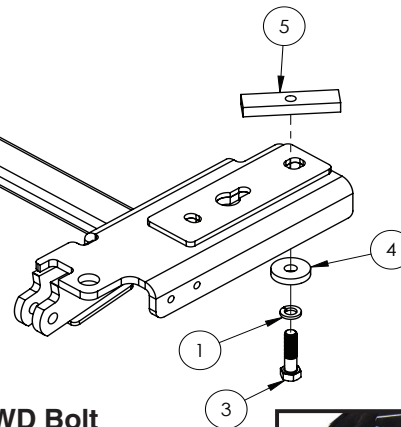
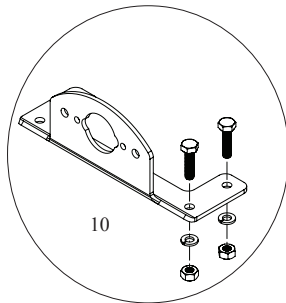
STANDARD BOLTS:			METRIC BOLTS:	
Size	Grade	Torque	Size	Torque
5/16"	5	20 ft/lbs.	8mm	22 ft/lbs.
3/8"	5	35 ft/lbs.	10mm	42 ft/lbs.
7/16"	5	56 ft/lbs.	12mm	70 ft/lbs.
1/2"	5	85 ft/lbs.	14mm	95 ft/lbs.

BASEPLATE

4WD: Pin Height - 15-1/2" Center - 30-1/4"
2WD: Pin Height - 14" Center - 30-1/4"



2WD Bolt Configuration



4WD Bolt Configuration



9518296 PARTS LIST

REF. NO.	PART NO.	QTY.	DESCRIPTION
1.	00084	6	1/2" Lock Washer
2.	00085	4	1/2" Flat washer
3.	01253	6	1/2" x 2" Bolt Gr.5
4.	03804-95	2	1/2" Heavy Washer
5.	09635-95	2	Thread Plate (4 wheel drive only)
6.	11704-35	2	Nut Strip (2 wheel drive only)
7.	14420-35	1	Base Plate Crossmember
8.	12979	1	Pull Ear Cover (not shown)
9.	12980	1	Pull Ear Cover (not shown)
10.	5937	1	Plug Mount Kit
11.	12329	1	Loctite (not shown)
12.	14119-95	2	Stud Bolt (not shown)
13.	14422	2	Air Dam Spacer (not shown)

Please order replacement parts by PART NO. and DESCRIPTION.

ASSEMBLY
OPERATION
REPLACEMENT PARTS

READ complete manual CAREFULLY
BEFORE attempting operation.

Doing Our Best to Provide You the Best

WARRANTY POLICY & REGISTRATION

Go online to www.demco-products.com to review Demco warranty policies and register your Demco product.

WARNING: FAILURE TO FOLLOW THESE INSTRUCTIONS CAN RESULT IN LOSS OF TOWING VEHICLE CONTROL, SEPARATION OF THE TOW BAR FROM THE TOWING VEHICLE, SEPARATION OF THE TOWED VEHICLE FROM THE TOW BAR, CAUSING SEVERE PERSONAL INJURY, DEATH, OR PROPERTY DAMAGE.

CAUTION

Safety is of utmost importance at all times. There are several items that must be checked each time before using and while using a tow bar.

Before allowing anyone to hook up or operate a tow bar, be sure they have read and understand the proper operating procedure.

DO NOT use worn or damaged cables and/or pins.

Be sure the **SAFETY CABLES** are hooked, chassis to chassis, to both the towing and towed vehicles using the crisscross method.

Check clearance between vehicles in a turning situation.

Check base plate mounting bolts for tightness and frame for metal fatigue.

Do not load the towed vehicle with anything as you may exceed the towing capacity of the tow bar.

Keep fingers away from pivot points to prevent personal injury.

Be sure the steering components of the towed vehicle are properly aligned.

NOTE: This unit can be backed up in moderate increments. Any severe backwards cornering could result in damage to the Tow Bar and/or towed vehicle chassis.

For automatic transmissions: Consult your vehicle owners manual for towing suitability with the drive shaft connected. Otherwise, the towed vehicle will have to be equipped with a transmission pump or drive shaft disconnect.

Check to make sure that all lights are in proper working order.

The information on towability of vehicles is reprinted with permission of MotorHome® Magazine, and is believed to be reliable. However, Demco does not warrant the information to be correct. Always consult your towed vehicle owner's manual and follow towing instructions. Each year, MotorHome® Magazine, compiles a list of vehicles that can be towed four-down behind a motorhome with no modifications required. This guide contains only those vehicles that have been approved by their manufacturers for towing.

Caution: MotorHome® Magazine left out any vehicles that have towing speed limits slower than 55 m.p.h., or distance limits of less than 200 miles. At a minimum, these vehicles require significant modification, such as the use of an aftermarket product, to make them towable. The availability of a **Demco Tow Bar Base Plate** does not imply that these vehicles can be modified or that there is an aftermarket product available. Refer to your vehicle owner's manual or consult your dealer to determine whether your vehicle can be modified to make it towable. Failure to observe this precaution could result in property damage or personal injury.

IMPORTANT INSTALLATION ITEMS

DEMCO products and accessories are intended to be installed by professional installers with experience, proper equipment and the ability to do modification work. Installers with these qualifications can be found in RV and Automotive Service Centers.

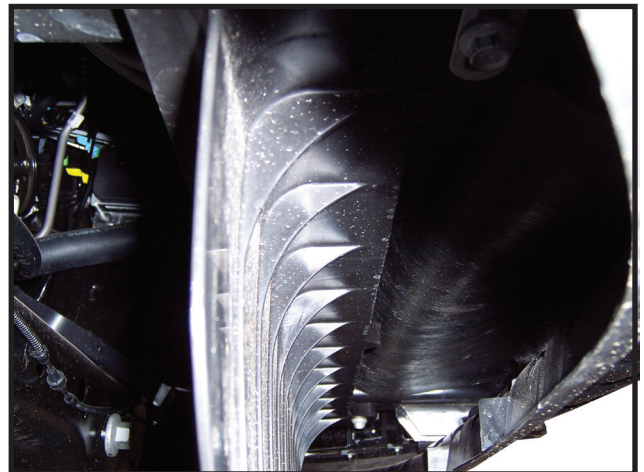
If the car to be towed has been in an accident, the chassis may be damaged in an area where the Base Plate attaches. It may no longer be suitable for towing. Extreme caution and careful examination are required in such a situation. It is also likely, even from a minor accident, that the hole alignment will be more difficult due to hole alignment problems.

Many DEMCO Base Plates are designed to use existing holes and hardware to mount the Base Plate to the towed vehicle. Even though the bolt is there, however, do not assume it is adequate for mounting the Base Plate. Manufacturers make many changes in hardware both within and between model years. Be sure the bolt is long enough to protrude past the nut a distance no less than 1/2 the diameter of the bolt, after the Base Plate is mounted. The threads should be in good condition. **We require that "LOCTITE® Blue" be used on all bolts.** If a new bolt is required, be sure it is SAE Grade 5 or Metric 8.8.

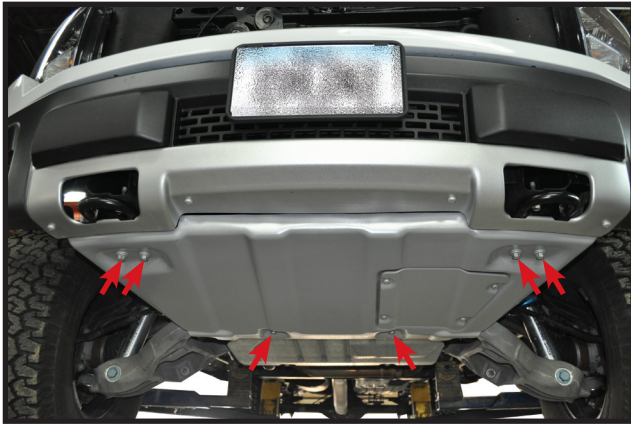
NOTE:

The dimensional variations between otherwise identical vehicles can be considerable. Some minor modifications may have to be made to ensure a proper fit.

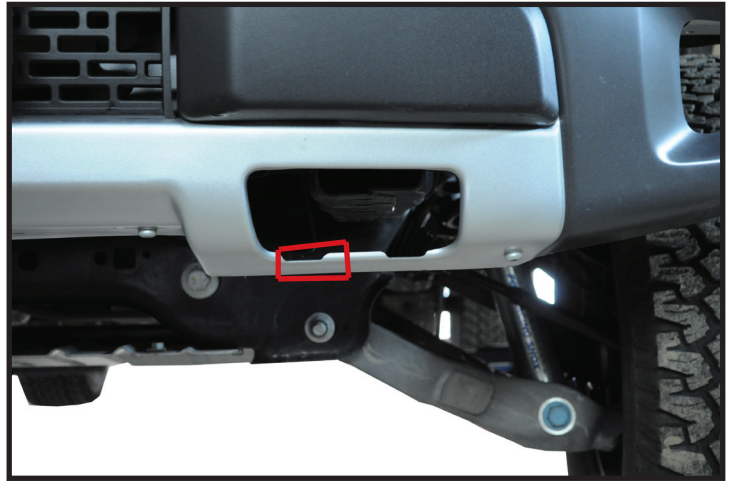
INSTALLATION INSTRUCTIONS



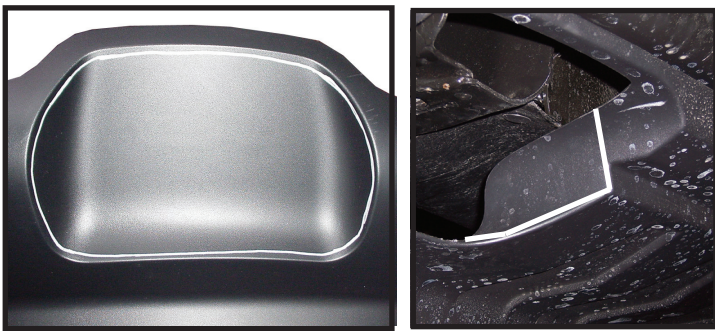
1. If equipped with a straight air dam as shown remove and discard air dam, bolts, and nut clips. If equipped with a curved air dam remove and set aside.



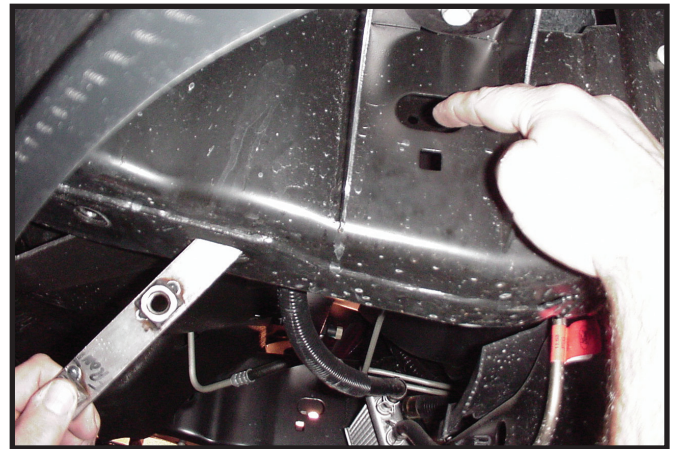
1a. Raptor only: remove six bolts from metal skid plate and remove.



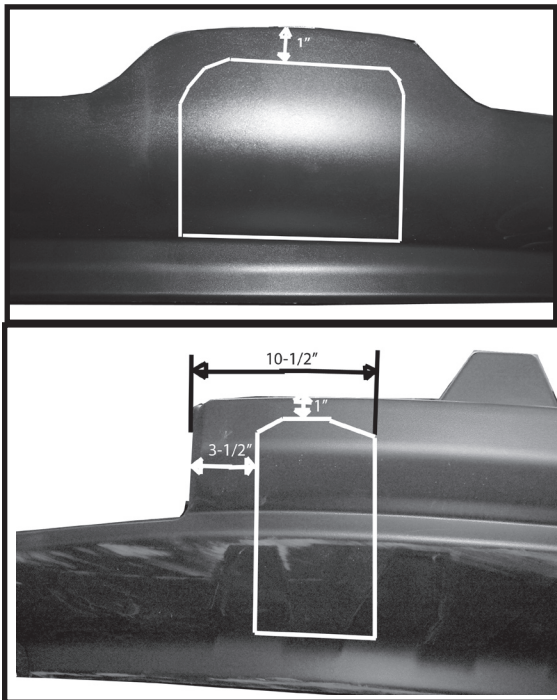
2b. Raptor only: trim lower part of fascia as shown. Some fine trimming may be required for desired look when installing baseplate.



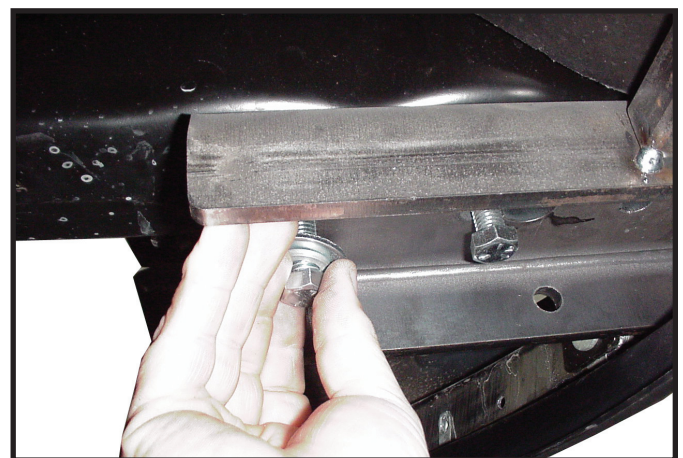
2. Without tow hooks: cut fascia according to picture shown above. **For all 2009 & newer 4wd model** trim as shown on right. **NOTE:** For vehicles with tow hooks skip to step 5.



3. For 2wd insert nut strip into frame (NOTE: Long tab end must go to front to vehicle). Line up nut strip with holes in frame and start center bolt without washers. Leave approximately 1-1/8" of threads showing. This will aid in the installation of base plate.



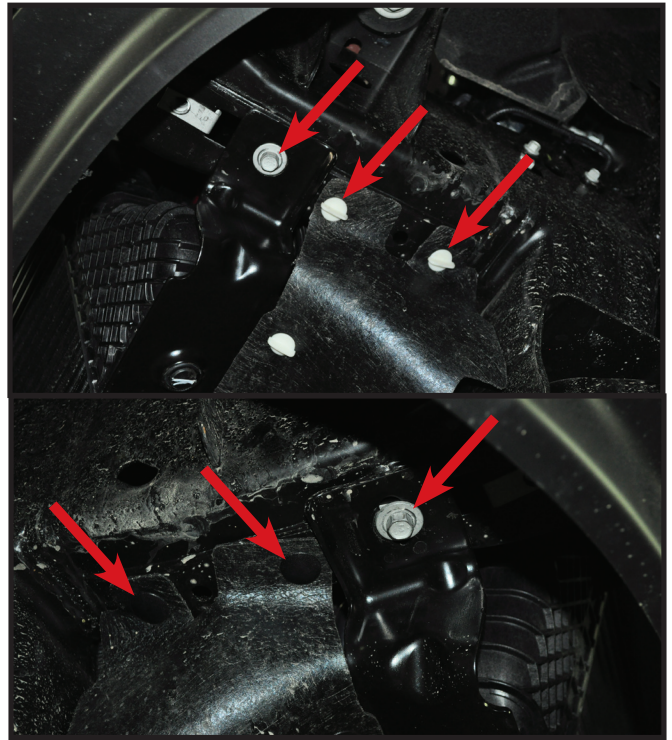
2a. 06-08 Two wheel drive: cut fascia according to picture shown above. For all 2009 2wd model trim as shown on bottom. Minor trimming may be required for desired fit.



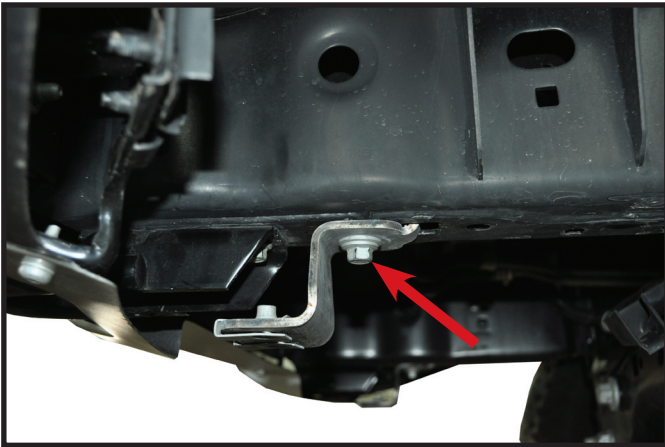
4. With an assistant put base plate up from rear and slide bolt through keyhole. Insert the other bolts with lock and flat washers and snug. Remove center bolts, add lock and flat washers. **NOTE:** Use Blue **LOCTITE** on all bolts and torque bolts according to the chart on front page.



5. Remove tow hooks, on each side, by removing front bolt and loosening rear bolt from each hook. Leave approximately 1-1/8" of threads showing. This will aid in the installation of base plate. The tow hooks will not be reused.



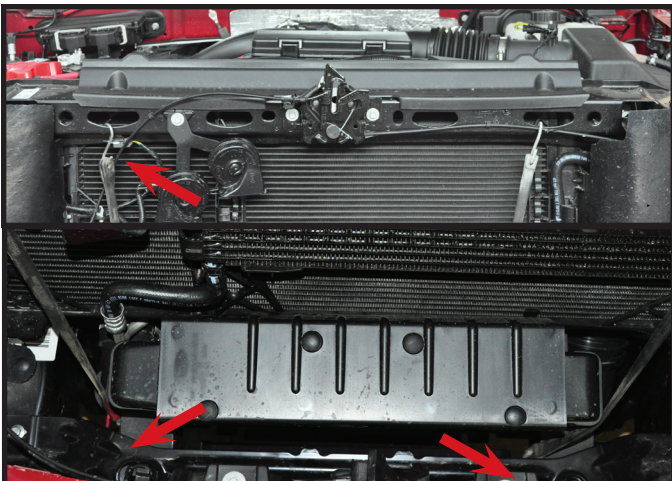
7. **Eco only:** Remove two bolts, two plastic push fasteners, and two plastic twist clips as shown in above pictures let bracket hang by rubber guard. Top picture is of drivers side and lower picture is of passenger side.



- 5a. **Raptor only:** remove metal skid plate front bracket on each side by removing screw.



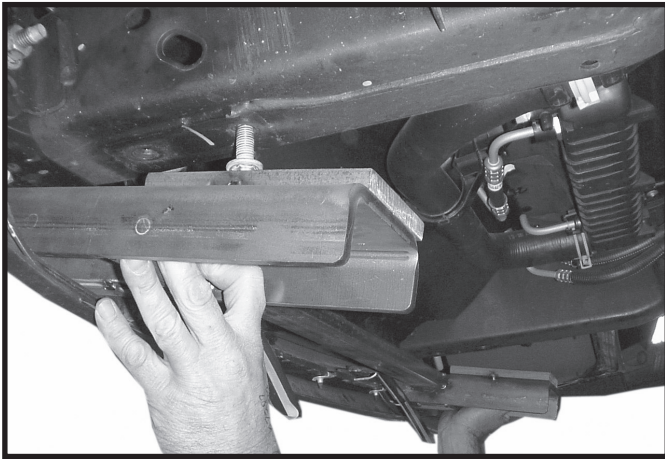
8. Remove nut clips or stud clips from each side where air dam was mounted or for Raptor where skid plate bracket was mounted.



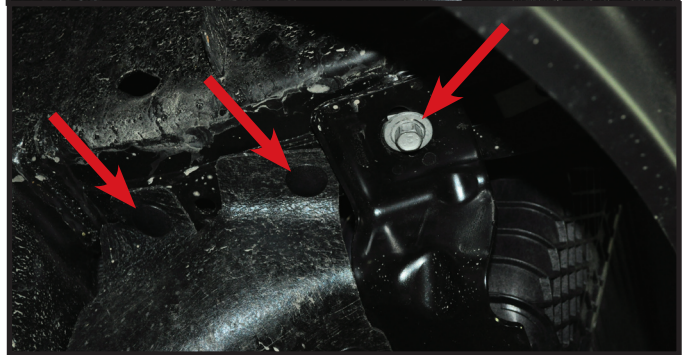
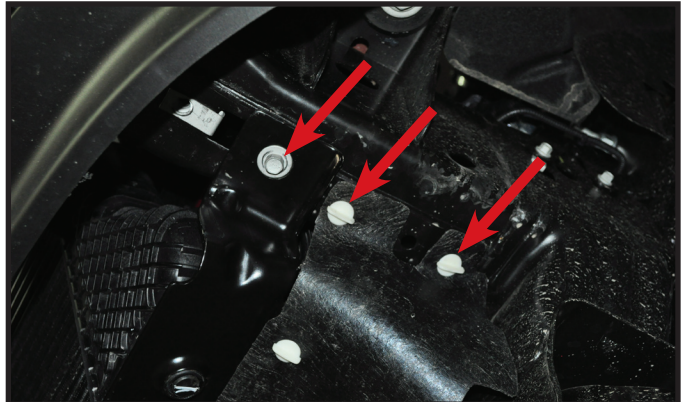
6. **Eco only:** Use two rubber straps to hold up intercooler.



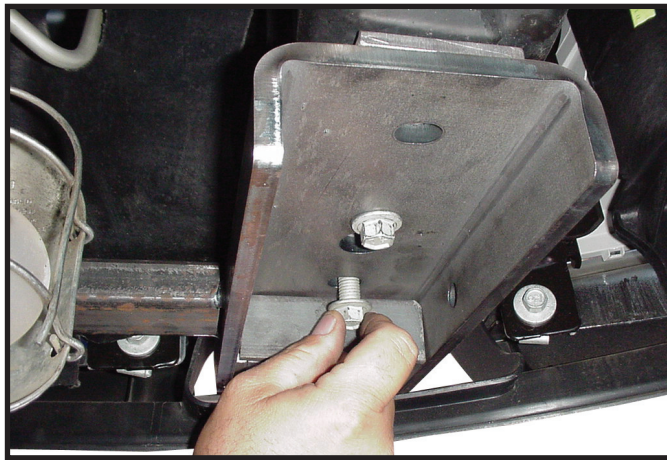
9. Reinstall factory bolt into rear tow hook hole in frame. Insert nut strip in to rear hole or slide in from front of frame opening and center over hole.



10. With an assistant put base plate up, putting pull ears through front opening from back of fascia. Align rear base plate key slot holes with previously installed bolts. Push base plate up and forward, so bolts are in the back of key slots. **NOTE:** Use Blue **LOCTITE**® on all bolts and torque bolts according to the chart on front page.



13. **Eco only:** Reinstall two bolts, two plastic push fasteners, and two plastic twist clips as shown in above pictures. Top picture is of drivers side and lower picture is of passenger side. **NOTE:** Make sure the cooler pegs are properly seated in holes of brackets.

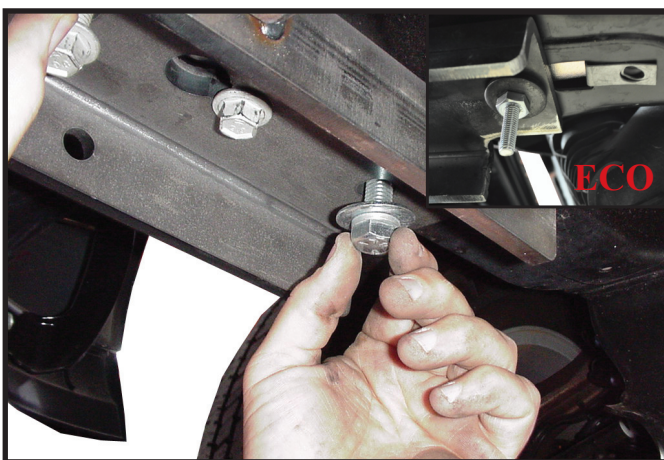


11. Start factory bolts in the front holes of base plate.

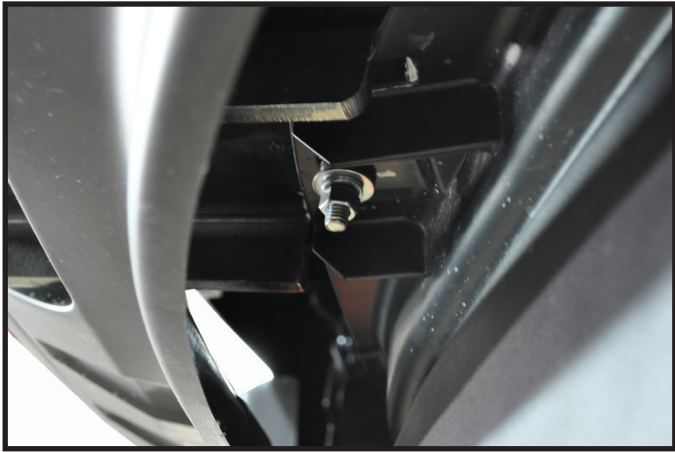


14. If equipped with bowed air dam trim as shown in picture on both sides. **NOTE:** Drivers side shown

15. **Raptor only:** reinstall metal skid plate.



12. Insert supplied 1/2" x 2" Gr. 5 Hex Head bolts (**ECO use stud bolt instead**) (**Raptor install front metal skid plate bracket when installing rear bolt**), 1/2" Lock washers, and 1/2" thick washers in rear holes (one on each side) and tighten all bolts. **NOTE:** Use Blue **LOCTITE**® on all bolts and torque bolts according to the chart on front page.



16. If equipped reinstall bowed air deflector with the provided plastic spacer between the baseplate and air dam using 3/8" flat washer, 3/8" lock washer, and 3/8" nut. **NOTE:** Use Blue **LOCTITE**® on all bolts and torque bolts according to the chart on front page.

17. Plug mount (item #10) may be installed if desired for wiring installation. Location of mount to be determined by the installer. **NOTE:** Excess material may be trimmed from bracket.

NOTES



P.O. BOX 189
4010 320th St., BOYDEN, IA. 51234
PH: (712) 725-2311
FAX: (712) 725-2380
TOLL FREE: 1-800-54DEMCO (1-800-543-3626)
www.demco-products.com

Go online to www.demco-products.com for Demco warranty policies & product registration.