



Chevrolet Sonic

6/14
TP20294, Rev.2

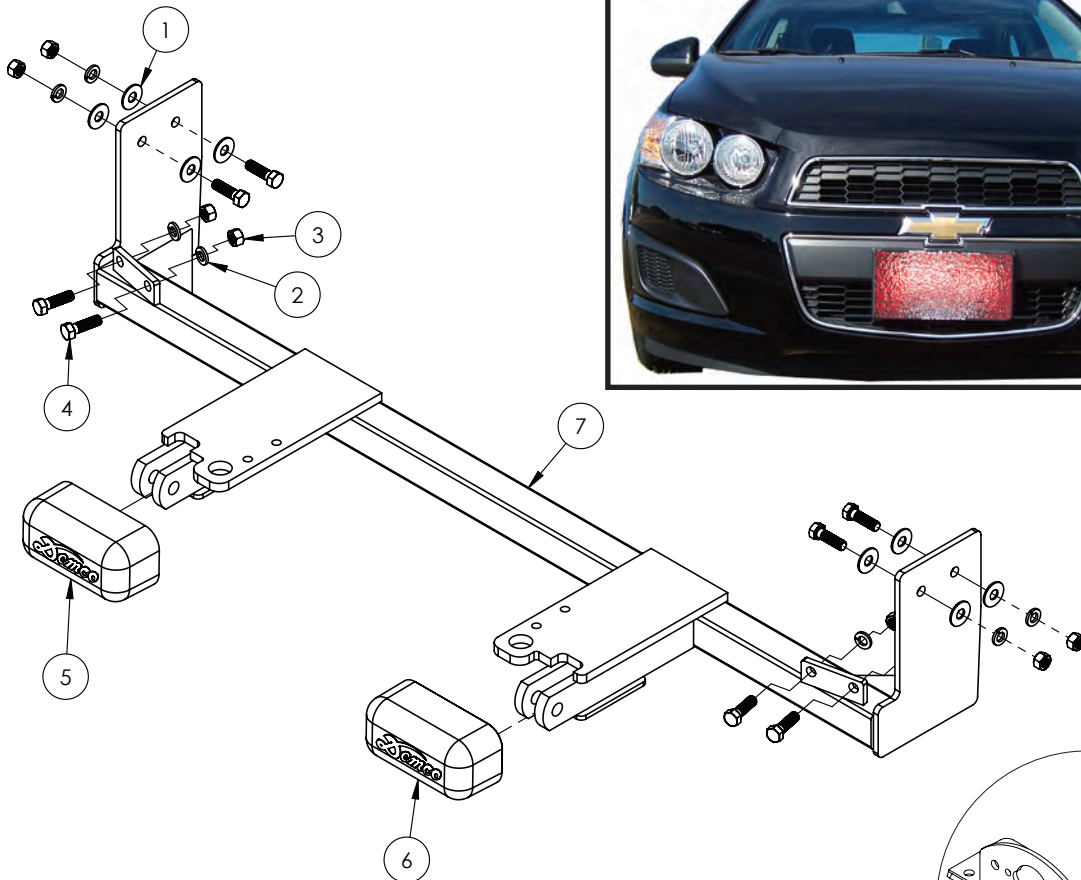


BOLT TORQUE SPECIFICATIONS

STANDARD BOLTS:			METRIC BOLTS:	
Size	Grade	Torque	Size	Torque
5/16"	5	20 ft/lbs.	8mm	22 ft/lbs.
3/8"	5	35 ft/lbs.	10mm	42 ft/lbs.
7/16"	5	56 ft/lbs.	12mm	70 ft/lbs.
1/2"	5	85 ft/lbs.	14mm	95 ft/lbs.

BASEPLATE

Pin Height: 14" Centers: 20"



9518294 PARTS LIST

REF. NO.	PART NO.	QTY.	DESCRIPTION
1.	00059	8	3/8" Flat Washer
2.	00060	8	3/8" Lock Washer
3.	00061	8	3/8" NC Hex Nut
4.	00523	8	3/8" NC x 1-1/4" Hex Bolt GR. 5
5.	12979	1	Pull Ear Cover "A"
6.	12980	1	Pull Ear Cover "B"
7.	14308-35	1	Baseplate Crossmember
8.	5937	1	Plug Mount Kit
9.	12329	1	Loctite (not shown)

Please order replacement parts by PART NO. and DESCRIPTION.

ASSEMBLY
OPERATION
REPLACEMENT PARTS

READ complete manual CAREFULLY BEFORE attempting operation.

Doing Our Best to Provide You the Best

WARRANTY POLICY & REGISTRATION

Go online to www.demco-products.com to review Demco warranty policies and register your Demco product.

WARNING: FAILURE TO FOLLOW THESE INSTRUCTIONS CAN RESULT IN LOSS OF TOWING VEHICLE CONTROL, SEPARATION OF THE TOW BAR FROM THE TOWING VEHICLE, SEPARATION OF THE TOWED VEHICLE FROM THE TOW BAR, CAUSING SEVERE PERSONAL INJURY, DEATH, OR PROPERTY DAMAGE.

CAUTION

Safety is of utmost importance at all times. There are several items that must be checked each time before using and while using a tow bar.

Before allowing anyone to hook up or operate a tow bar, be sure they have read and understand the proper operating procedure.

DO NOT use worn or damaged cables and/or pins.

Be sure the **SAFETY CABLES** are hooked, chassis to chassis, to both the towing and towed vehicles using the crisscross method.

Check clearance between vehicles in a turning situation.

Check base plate mounting bolts for tightness and frame for metal fatigue.

Do not load the towed vehicle with anything as you may exceed the towing capacity of the tow bar.

Keep fingers away from pivot points to prevent personal injury.


Be sure the steering components of the towed vehicle are properly aligned.

NOTE: This unit can be backed up in moderate increments. Any severe backwards cornering could result in damage to the Tow Bar and/or towed vehicle chassis.

For automatic transmissions: Consult your vehicle owners manual for towing suitability with the drive shaft connected. Otherwise, the towed vehicle will have to be equipped with a transmission pump or drive shaft disconnect.

Check to make sure that all lights are in proper working order.

The information on towability of vehicles is reprinted with permission of MotorHome® Magazine, and is believed to be reliable. However, Demco does not warrant the information to be correct. Always consult your towed vehicle owner's manual and follow towing instructions. Each year, MotorHome® Magazine, compiles a list of vehicles that can be towed four-down behind a motorhome with no modifications required. This guide contains only those vehicles that have been approved by their manufacturers for towing.

 **Caution: MotorHome® Magazine** left out any vehicles that have towing speed limits slower than 55 m.p.h., or distance limits of less than 200 miles. At a minimum, these vehicles require significant modification, such as the use of an aftermarket product, to make them towable. The availability of a **Demco Tow Bar Base Plate does not** imply that these vehicles can be modified or that there is an aftermarket product available. Refer to your vehicle owner's manual or consult your dealer to determine whether your vehicle can be modified to make it towable. Failure to observe this precaution could result in property damage or personal injury.

IMPORTANT INSTALLATION ITEMS

DEMCO products and accessories are intended to be installed by professional installers with experience, proper equipment and the ability to do modification work. Installers with these qualifications can be found in RV and Automotive Service Centers.

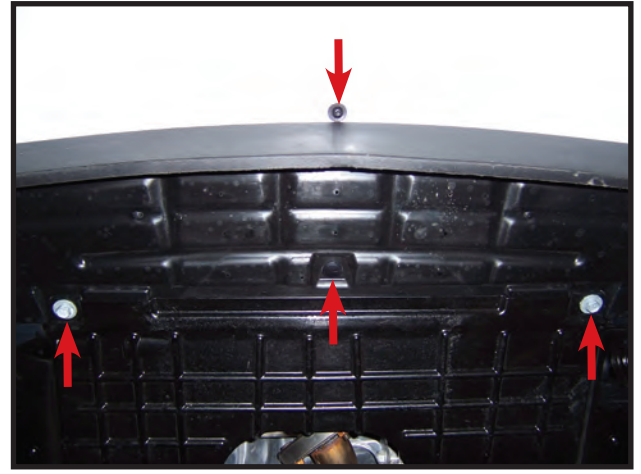
If the car to be towed has been in an accident, the chassis may be damaged in an area where the Base Plate attaches. It may no longer be suitable for towing. Extreme caution and careful examination are required in such a situation. It is also likely, even from a minor accident, that the hole alignment will be more difficult due to hole alignment problems.

Many DEMCO Base Plates are designed to use existing holes and hardware to mount the Base Plate to the towed vehicle. Even though the bolt is there, however, do not assume it is adequate for mounting the Base Plate. Manufacturers make many changes in hardware both within and between model years. Be sure the bolt is long enough to protrude past the nut a distance no less than 1/2 the diameter of the bolt, after the Base Plate is mounted. The threads should be in good condition. **We require that "LOCTITE® Blue" be used on all bolts.** If a new bolt is required, be sure it is SAE Grade 5 or Metric 8.8.

NOTE: The dimensional variations between otherwise identical vehicles can be considerable. Some minor modifications may have to be made to ensure a proper fit.



1. Remove six plastic push fasteners, four 10MM bolts, and eight phillips screws from top radiator cover. (Driver's side shown)



4. Remove one plastic push fastener, two 13MM screws, and one T20 Torx screw from front portion of belly pan on the underside.



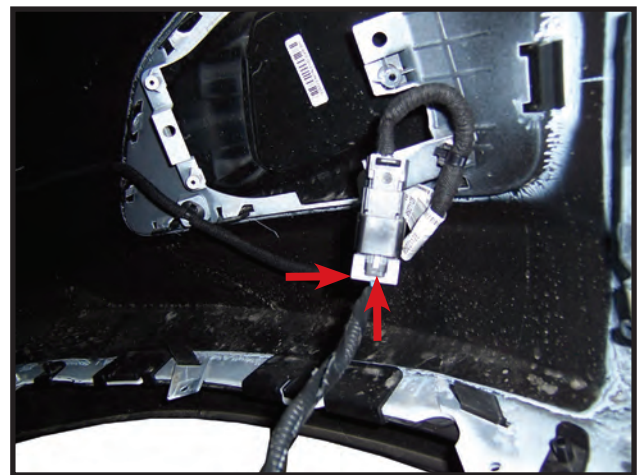
2. Remove four T20 Torx screws from each wheel well. (Driver's side shown)



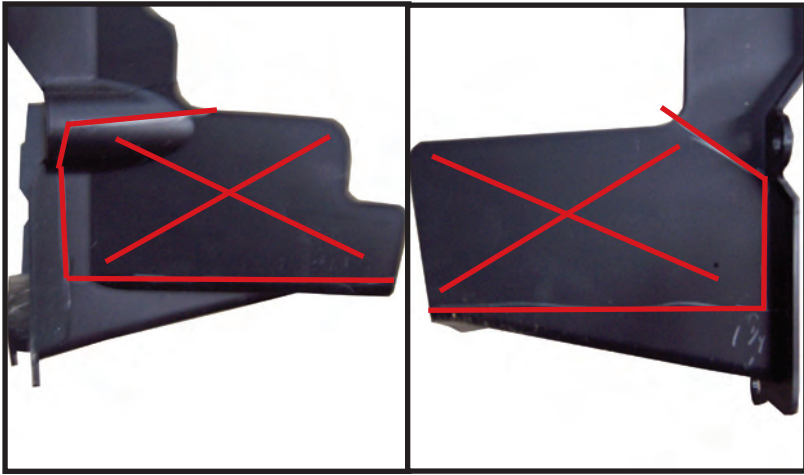
5. Remove two phillips screws from underside of fascia now visible after removing front portion of belly pan.



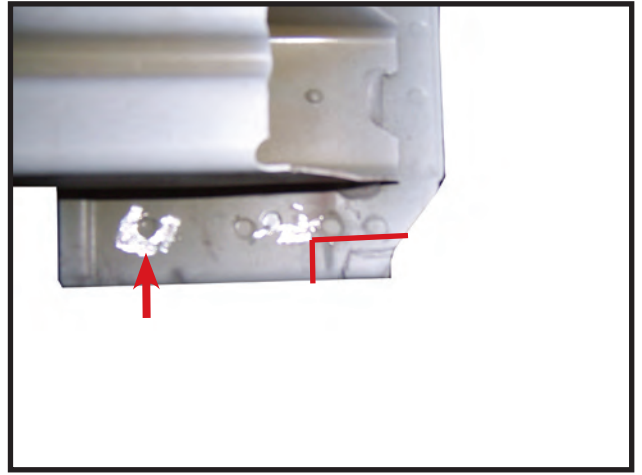
3. Remove three T20 Torx screws from each side on underside of fascia. (Driver's side shown)



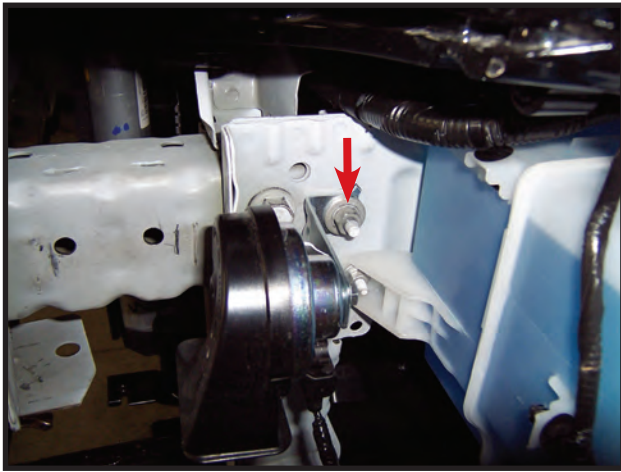
6. Remove fascia by pulling out on fascia by the fender and lifting up while pulling forward. Once fascia is released unplug temp. sensor by pushing white tab back to unlock and then press down on black tab to release. Unplug fog lights if equipped.



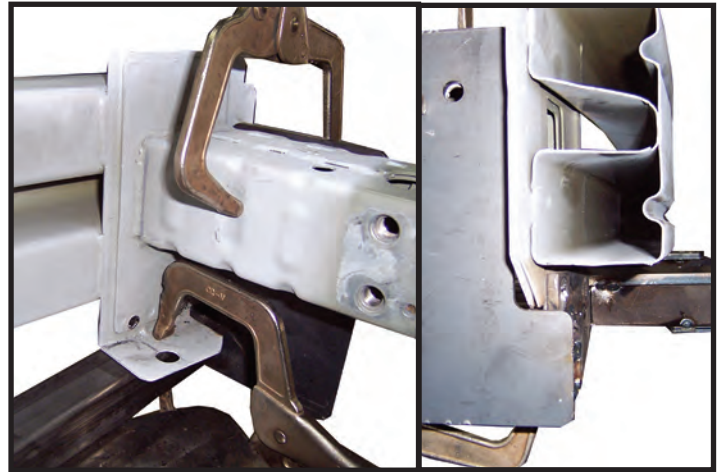
7. Trim air deflectors as shown in above pictures. The portion with the red X is what needs to be removed.



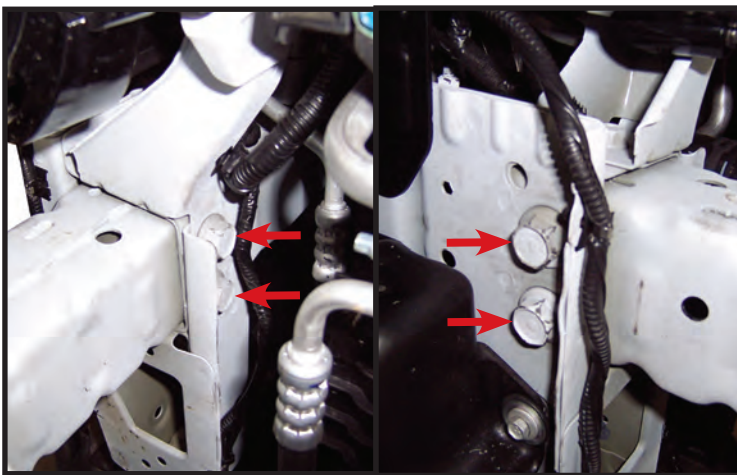
10. Once bumper is removed make sure flange of bumper is smooth by grinding by each spot weld as shown by arrow in picture. Trim bumper as shown by lines in picture. On the driver's side trim 1" wide by 1/2" tall and on passengers side trim 3/4" wide and 1/2" tall.



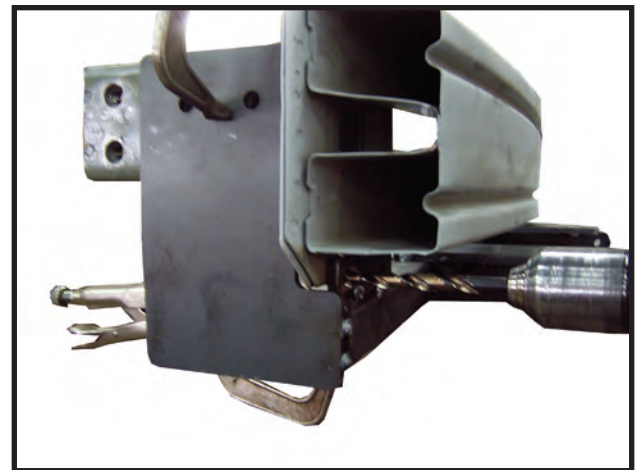
8. Remove nut from horn mount and let horn hang down.



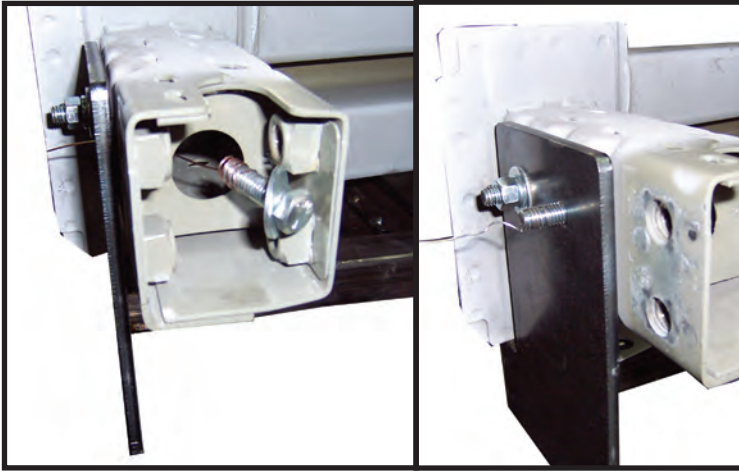
11. Slide bumper on to baseplate and pull tight to front mounting tabs of baseplate and clamp as shown in picture.



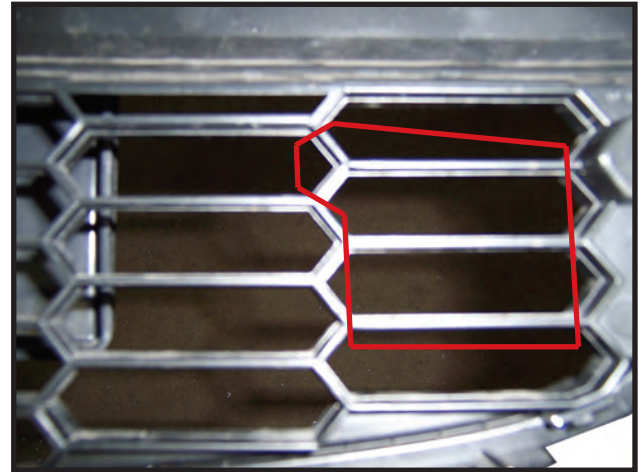
9. Remove four bolts from each side of the bumper, then remove bumper.



12. Drill four holes on each side of baseplate using a 13/32 drill bit.



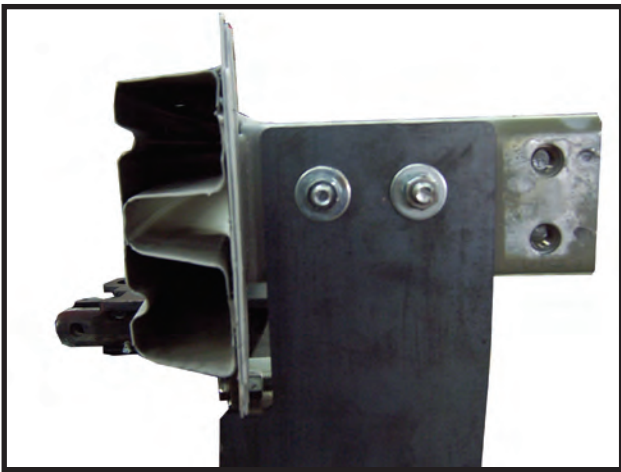
13. Use fish wire to help with install of bolts for the side mounts as shown in picture.



16. Cut lower grill bars as shown in picture. Trim as needed for desired look and fit. **NOTE:** Back side of passenger side shown in picture.

17. Reinstall horn and fascia in reverse order.

18. Plug mount (item #8) may be installed if desired in convenience holes on either chain anchor or as desired. **NOTE:** Excess material may be trimmed from bracket.



14. Bolt baseplate side mounts using 3/8" x 1-1/4" bolts with 3/8" lock washers, 3/8" lock washers, and 3/8" nuts. Don't use flat washers when bolting through front tab of baseplate as shown on front cover. Tighten bolts according to torque chart on front page. **NOTE:** Use **LOCTITE**® on all bolts and nuts.



15. Reinstall bumper using the eight factory bolts that were removed in step 9.

NOTES

NOTES



P.O. BOX 189
4010 320th St., BOYDEN, IA. 51234
PH: (712) 725-2311
FAX: (712) 725-2380
TOLL FREE: 1-800-54DEMCO (1-800-543-3626)
www.demco-products.com

**Go online to www.demco-products.com for Demco
warranty policies & product registration.**